

USB Interface Board

INSTALLATION

The MMF Cash Drawer USB Interface Board has been designed to interface with any standard Universal Serial Bus (USB) Type A Port. The MMF Cash Drawer USB Interface Board is factory defaulted to recognize the first cash drawer to be installed as drawer number one (1), see Figure 1.0 Dip-Switch Position (Default Setting). If user decides to assign another drawer number, please follow the pin configuration illustrated in SWITCH SETTINGS Table 1.0 or label attached to the interface for correct pin orientation.

NOTE: Do not assign two (2) USB interface cash drawers within the same system with the same cash drawer number.

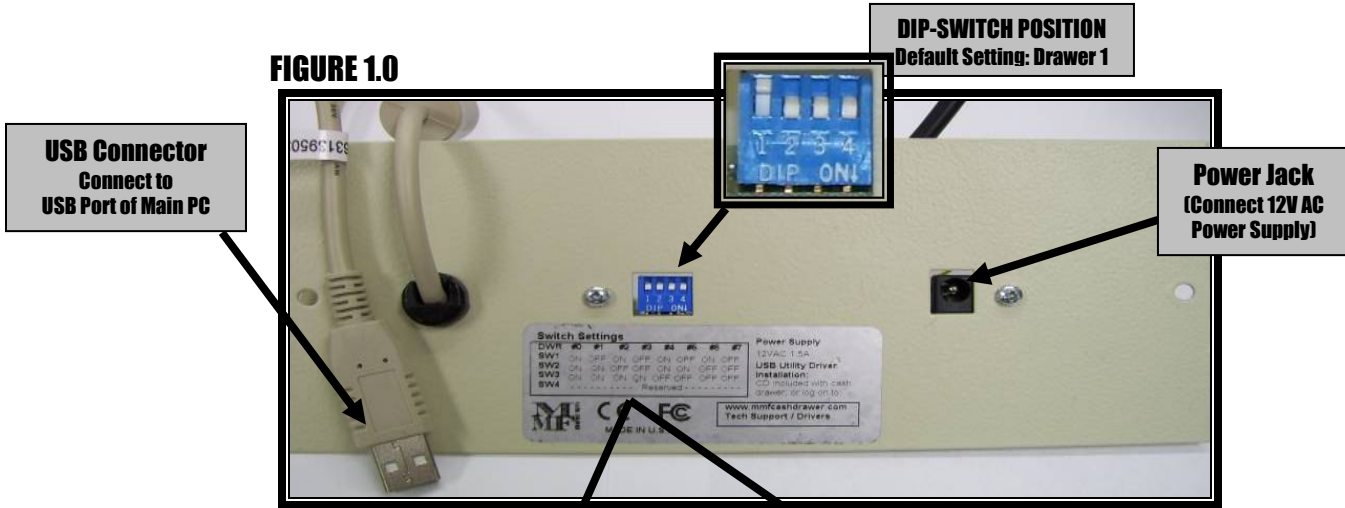


TABLE 1.0

SWITCH SETTINGS		DRAWER							
		0	1	2	3	4	5	6	7
DIP-SWITCH	SW1	ON	OFF	ON	OFF	ON	OFF	ON	OFF
	SW2	ON	ON	OFF	OFF	ON	ON	OFF	OFF
	SW3	ON	ON	ON	ON	OFF	OFF	OFF	OFF
	SW4	RESERVED							

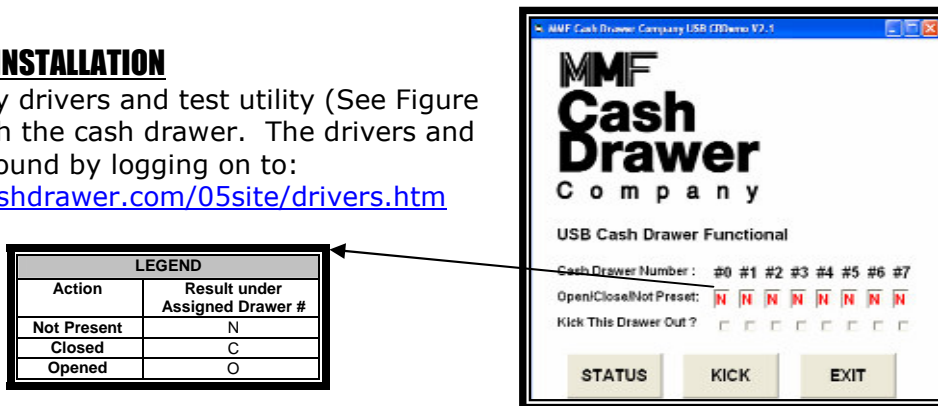
Note: OFF is when pins are facing up (↑). ON is when pins are facing down (↓).

USB UTILITY DRIVER INSTALLATION

A CD with the utility drivers and test utility (See Figure 1.1) is included with the cash drawer. The drivers and test could also be found by logging on to:

<http://www.mmfcashdrawer.com/05site/drivers.htm>

FIGURE 1.1



MMF OPOS DRIVER V1.9 INSTALLATION

STEP 1

Install MMF OPOS Driver V1.9, available under:

<http://www.mmfcashdrawer.com/05site/drivers.htm>

ⓘ The user installing the MMF cash drawer software and configuring the cash drawer devices on Windows 2000 and Windows XP is required to have Administrator Rights. Once the software is installed, all users with normal rights can use it.

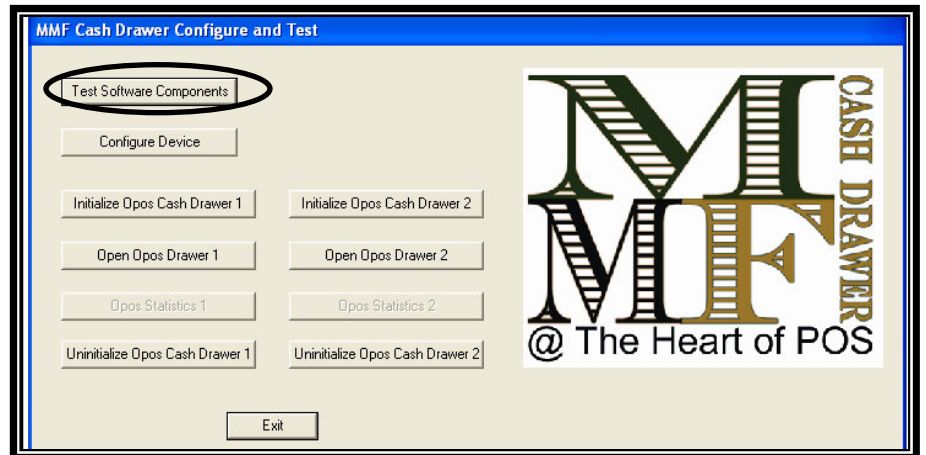
STEP 2

To install the driver run the file: Setup.exe. When the installation is complete, a start menu item under the 'Programs' folder will have entries for both the OPOS and utility driver.

STEP 3

Open the "Configure and Test" program and click on "Configure Device". (See Figure 1.2)

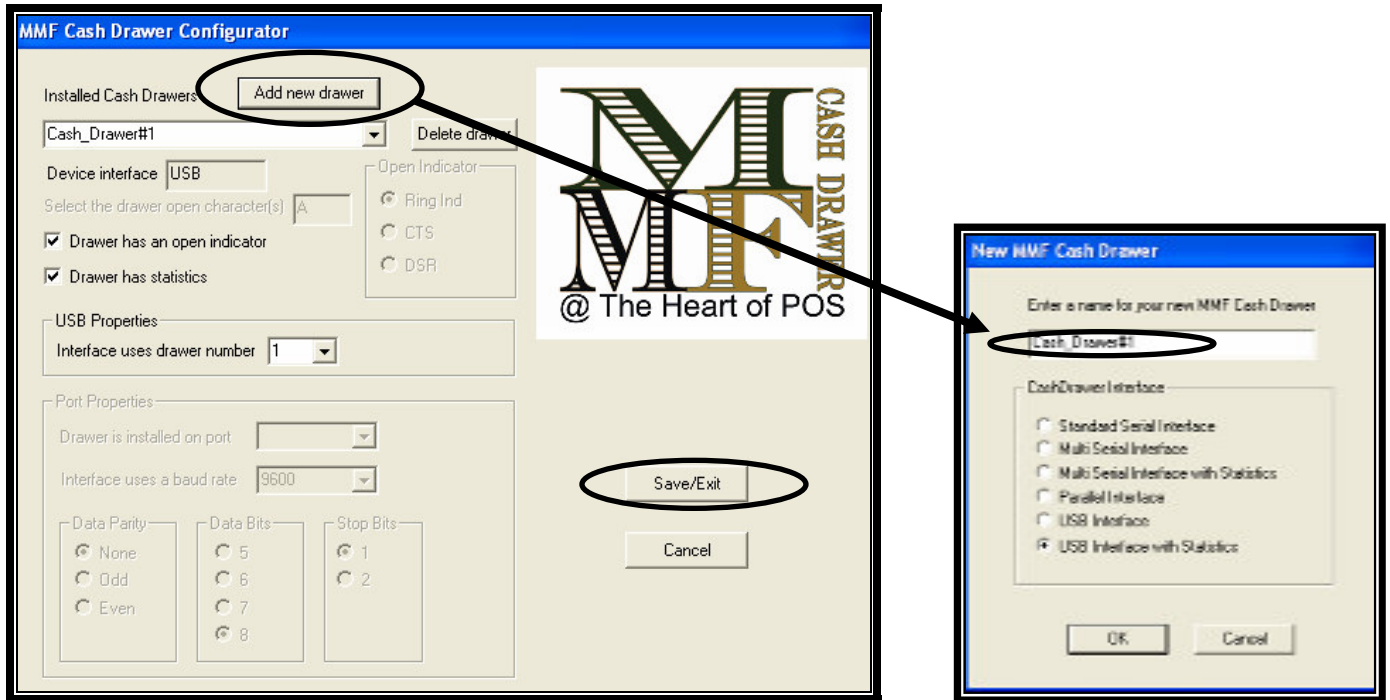
FIGURE 1.2



STEP 4

To configure drawer - click on "Add new drawer" called *Cash_Drawer#1*. Type all the settings as illustrated on the configuration screen (See Figure 1.3) and click "OK" to save settings.

FIGURE 1.3

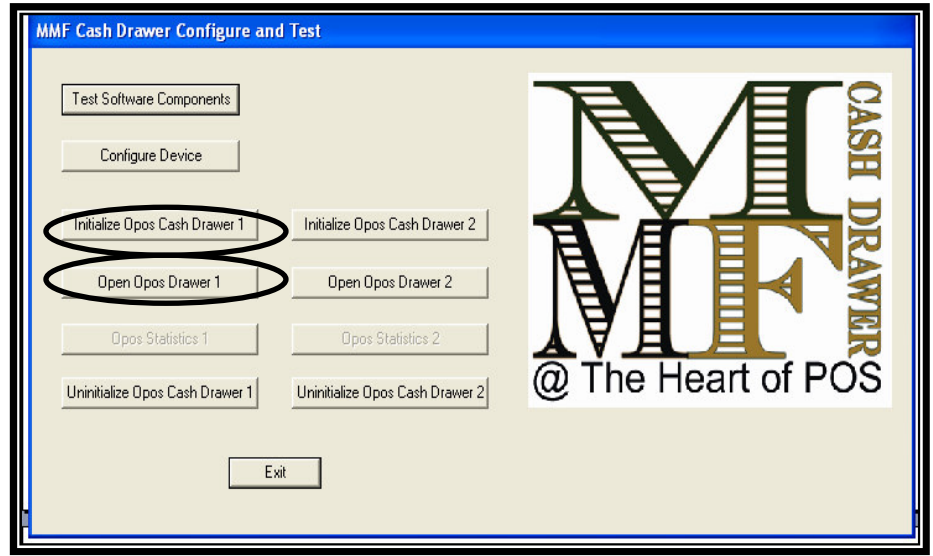


STEP 5

To test drawer - Click on "Initialize OPOS Drawer 1" then, click on "Open OPOS Drawer 1" (See Figure 1.4 the following message will be displayed:



FIGURE 1.4



STEP 6

Click "OK" to the above message and then manually close the cash drawer. When the drawer is completely closed the following message will be displayed:



STEP 7

Click on "Un-initialize OPOS Drawer 1" and the test is complete.