


# USB Interface with Serial Emulation



**USB Interface**  
**P/N#2261998USBA2-XX:** USB with Serial Emulation Interface KIT (Includes Power Supplies & USB Host Cables)  
**P/N# 641-2575-00:** Cash Drawer Power Supply (12V dc)  
**P/N# 641-25BX-00:** USB Host Cable

**GETTING STARTED:**

- 1 Load the MMF USB Serial Emulation Driver into the host computer unit.**  
 Download the **MMF USB Serial Emulation Driver** file from our website by opening the zipped file  
 Website address: [http://www.mmfcashdrawer.com/08/driver\\_downloads.html](http://www.mmfcashdrawer.com/08/driver_downloads.html)

- » Open folder named **"MMF USB Serial Emulation Driver"**
- » Select the file named **"mchpcdc.inf"**
- » Save in 'C:\Program Files' or 'Desktop'

- 2 Connect the Power Supply (12VDC / .8 Amp)**  
 Plug the small plug tip to the interface power port in the back of the cash drawer interface as illustrated in Figure 1. Plug the power adapter end into a 120 Volt AC Recepticle.  
 Always connect the power supply before the USB Cable. LED#2 (GREEN) and LED#5 (RED) should be ON at this time, refer to Table 2.0 for reference.

- 3 Connect USB Cable**  
 Plug the Type B connector end to the USB Port of the interface as illustrated in Figure 1 and the Type A Connector to the USB port of the Host Computer. ALL the LED except LED#4 (GREEN) should be ON at this time. Refer to Table 2.0 for LED State.

- 4 Check which COM Port the Host computer has assigned as the Virtual COM Port**

- »Go to **START Menu**
- »Select **Control Panel**
- »Click on the **System Icon**
- »Select the **Hardware Tab**
- »Click on **Device Manager** to view COM Port assigned.

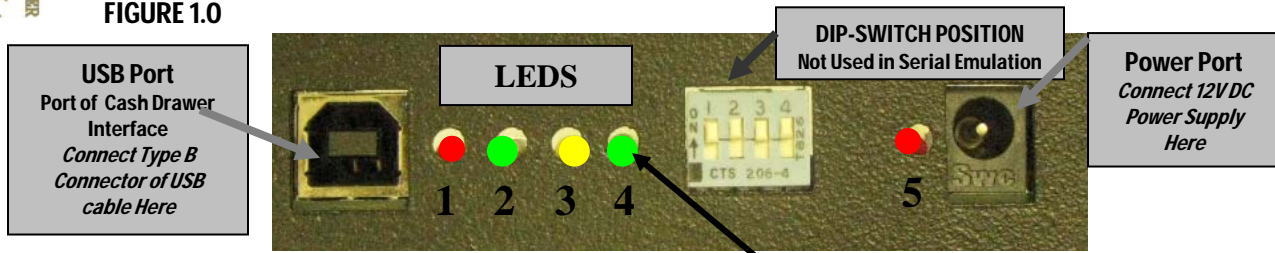


**NOTE: On this particular computer COM4 has been automatically assigned as the virtual com port. This is the com port designation you will use to test the interface functionality (STEP 5) and for your POS software setup.**

- 5 Test Functionality of Interface**  
 Follow the steps detailed below for 'Serial Emulation Test Procedure'.

- 6 Install OPOS Drivers**  
 Follow the steps detailed below for 'MMF OPOS Drivers Installation'.

FIGURE 1.0



This light should not be ON at any time

TABLE 2.0

LED NAME	COLOR	STATE		
		ON		OFF
		Solid	Intermittent	
LED-1	Red	USB Cable Connected		No USB Cable
LED-2	Green	Cash Drawer Closed	Communication Transmit	Cash Drawer Open
LED-3	Yellow	Solenoid in position and ready to kick drawer open		Solenoid kicked drawer open
LED-4	Green	<del>Port Powered- Not Recommended</del> 1st: Plug USB Cable 2nd: Plug Power Adapter	See Note 1	<del>Adapter Powered</del> 1st: Plug Power Adapter 2nd: Plug USB Cable
LED-5	Red	Power Supply Connected		No Power Supply

**NOTE 1**  
Port Powered: Draws power from the computer, which will not provide enough power to operate cash drawer's latch mechanism.

**NOTE 2:**  
Adapter Powered: Draws power from the provided power supply adapter.

**Serial Emulation Test Procedures**

**Test from Command Prompt:**

- Go to Start » Programs » Accessories » Command Prompt
- Configure the COM port settings by typing:  
**mode com1:9600,n,8,1** <enter>  
(If Device manager created COM4 or any other COM port (1-9) as your virtual com port, then use that number, i.e. "mode com4:9600,n,8,1")

The computer should return the following

```

C:\Documents and Settings\igomez>mode com1:9600,n,8,1
Status for device COM1:
-----
Baud:          9600
Parity:        None
Data Bits:     8
Stop Bits:     1
Timeout:       OFF
XON/XOFF:     OFF
CTS handshaking: OFF
DSR handshaking: OFF
DSR sensitivity: OFF
DIR circuit:   ON
RTS circuit:   ON
    
```

- To test the cash drawer, type the following:  
**copy con com1:** <enter>  
**A** <enter>  
**Press 'F6' Key** <enter>

(If Device manager created COM4 or any other COM port (1-9) as your virtual com port, then use that number, i.e. "copy con com4:")

The drawer should open at this point and the PC will return the following

```

C:\Documents and Settings\testp>copy con com1:
AA
^Z
1 file(s) copied.
C:\Documents and Settings\testp>
    
```

**An alternative test command program:**

- Configure the COM port settings by typing:  
**mode com1:9600,n,8,1** <enter>  
(If Device manager created COM4 or any other COM port (1-9) as your virtual com port, then use that number, i.e. "mode com4:9600,n,8,1")
- Type: **echo>com1** <enter>  
The drawer should open at this point  
(If Device manager created COM4 or any other COM port (1-9) as your virtual com port, then use that number, i.e. "echo> com4")
- Close drawer. To open again, Press F3.  
Cash drawer should open and computer should reply with: **echo>com1**

**If the drawer fails to open using the test command program, refer to the troubleshooting guide. If drawer opens successfully, install your POS software or OPOS Drivers, if needed. If the cash drawer fails to open with the POS Software, contact your software manufacturer for further assistance.**

**MMF OPOS DRIVER V1.9 INSTALLATION**

**STEP 1**

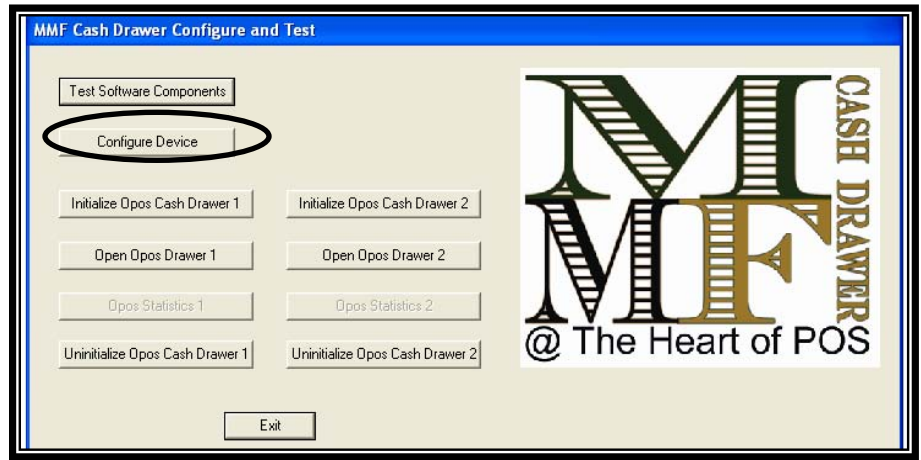
Install MMF OPOS Driver V1.11, available under: [http://www.mmfcashdrawer.com/08/driver\\_downloads.html](http://www.mmfcashdrawer.com/08/driver_downloads.html)

ⓘ The user installing the MMF cash drawer software and configuring the cash drawer devices on Windows 2000 and Windows XP is required to have Administrator Rights. Once the software is installed, all users with normal rights can use it.

**STEP 2**

If using CD, open the file named MMF OPOS 1.11  
 To install the driver run the file: Setup.exe. The program will ask you to unzip, click Unzip.  
 » After download is completed, go to "Start" Menu  
 » Go to "All Programs"  
 » Select the "MMF Cash Drawer" program  
 » Select the "Configure and Test" program

**FIGURE 1.2**



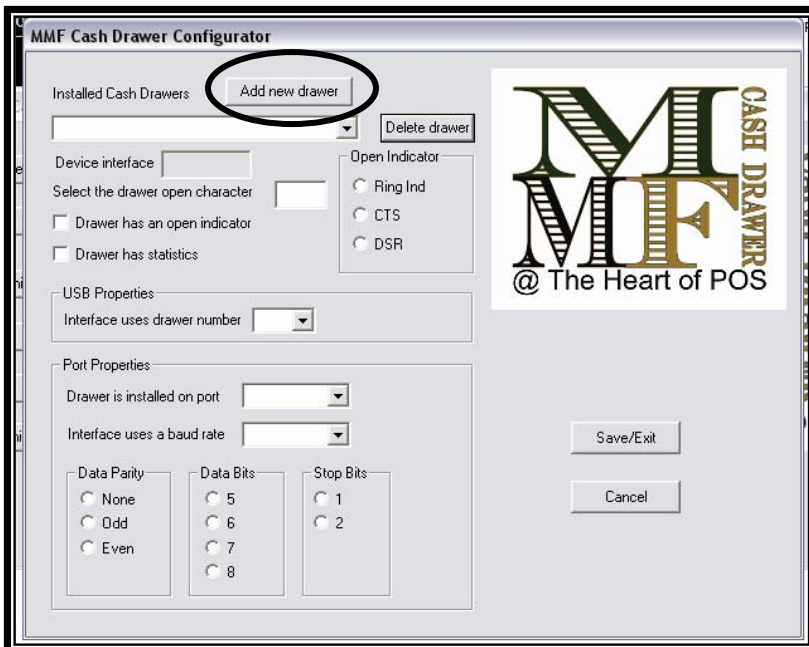
**STEP 3**

Open the "Configure and Test" program and click on "Configure Device". (See Figure 1.2)

**STEP 4**

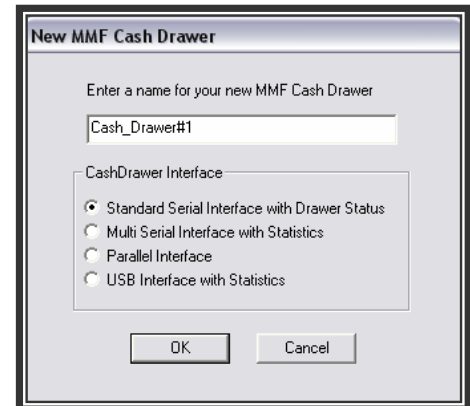
To configure drawer - click on "Add new drawer" (See Figure 1.3). A window will appear asking you to enter a name for your cash drawer, name it: **Cash\_Drawer#1** (See NOTE). Select the option of "Standard Serial Interface with Drawer Status" as the Cash Drawer Interface (See Figure 1.4) and click "OK" to save settings.

**FIGURE 1.3**



**NOTE:** The name **Cash\_Drawer#1** is case and character sensitive.

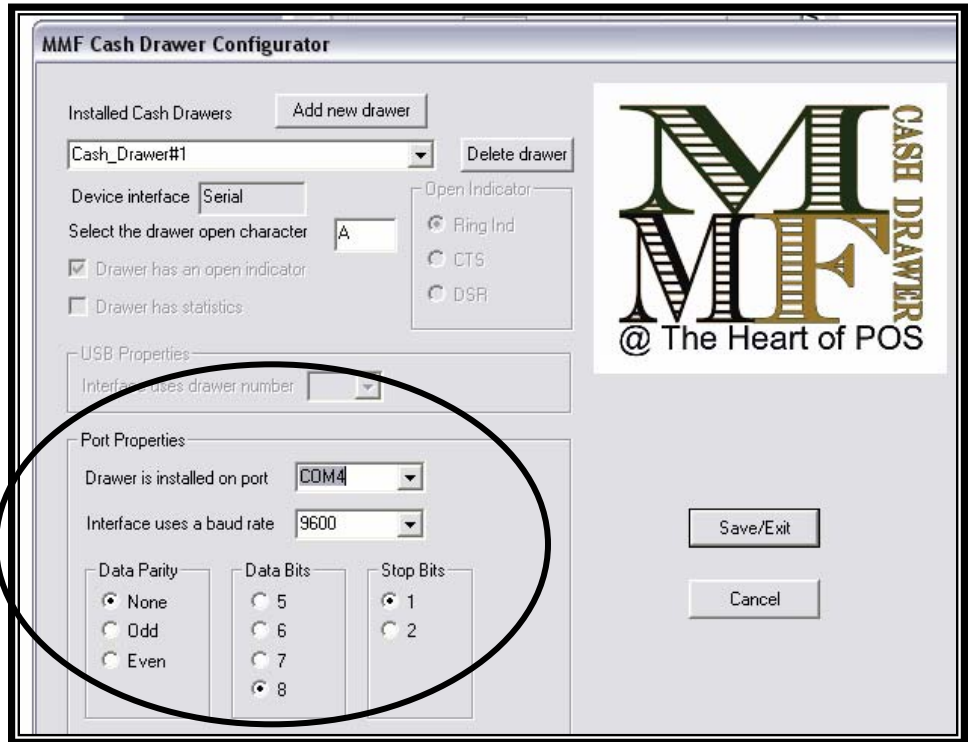
**FIGURE 1.4**



**STEP 5**

Under 'Port Properties' choose the Port which Device Manager has assigned as the Virtual COM Port. In this example, Port 4 was the COM Port assigned.

Then, click on Save/Exit



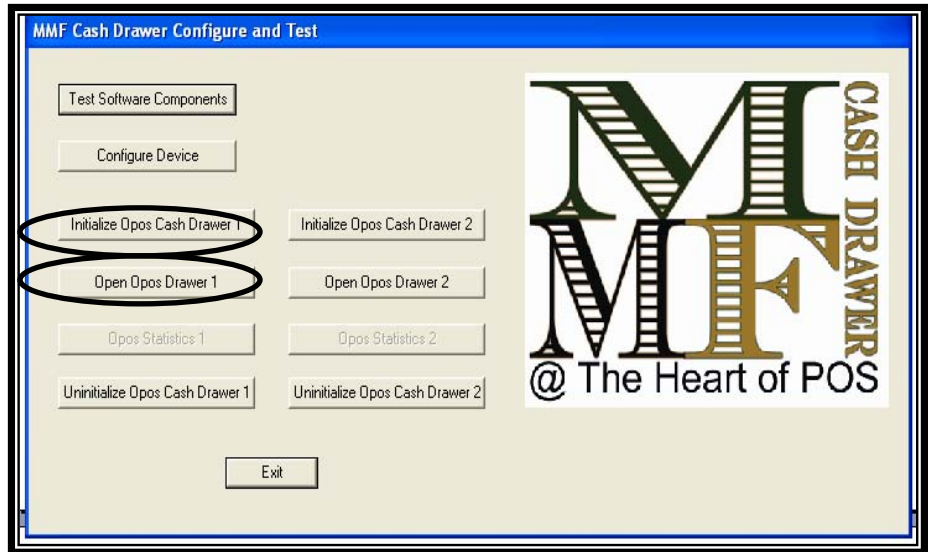
**STEP 6**

To test drawer - Click on "Initialize OPOS Drawer 1" then, click on "Open OPOS Drawer 1" (See Figure 1.4 the following message will be displayed:



**STEP 7**

Click "OK" to the above message and then manually close the cash drawer. When the drawer is completely closed the following message will be displayed:



**STEP 8**

Click on "Un-initialize OPOS Drawer 1" and the test is complete. Repeat only if necessary.