

PoweredUSB Interface Board

COMPONENTS

- ☒ 2261998PWRUSB-XX – PoweredUSB Interface KIT
- ☒ Part# 641-25CJ-00- PoweredUSB Cable



INSTALLATION

- ❶ Select Cash Drawer Number
The MMF Cash Drawer USB Interface Board is factory defaulted to recognize the first cash drawer to be installed as drawer number seven (7), see Figure 1.0 Dip-Switch Position (Default Setting). If user decides to assign another drawer number, please follow the pin configuration illustrated in SWITCH SETTINGS Table 1.0 or label attached to the interface for correct pin orientation.
- ❷ Connect the 12V PoweredUSB Rated Cable to the host (12VDC / .8 Amp)
Plug the 2x4 Molex Latch-n-Lock connector end to the USB Port of the interface and the 12V Connector (Color:Teal) end to the corresponding 12V jack PoweredUSB port of the Host Computer or PoweredUSB Hub.
- ❸ Test Functionality of Interface
Follow the steps detailed below for 'USB Test Utility Installation'.
- ❹ Install OPOS Drivers (If Required)
Follow the steps detailed below for 'MMF OPOS Drivers Installation'.

NOTE: Do not assign two (2) USB interface cash drawers within the same system with the same cash drawer number.

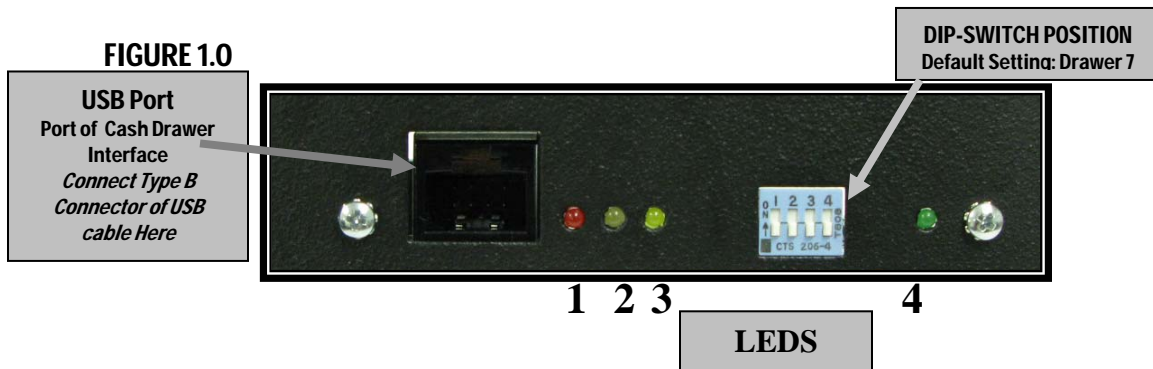


TABLE 1.0

SWITCH SETTINGS		DRAWER							
		0	1	2	3	4	5	6	7
DIP-SWITCH	SW1	ON	OFF	ON	OFF	ON	OFF	ON	OFF
	SW2	ON	ON	OFF	OFF	ON	ON	OFF	OFF
	SW3	ON	ON	ON	ON	OFF	OFF	OFF	OFF
	SW4	OFF	OFF	OFF	OFF	OFF	OFF	OFF	OFF
Reset Statistics	SW4	ON	ON	ON	ON	ON	ON	ON	ON

NOTE: OFF is when pins are facing down (↓). ON is when pins are facing up (↑).

NOTE: ONLY place SW4 on the ON Position if you will like to reset the statistics stored and reported though the OPOS Drivers.

TABLE 2.0

LED NAME	COLOR	STATE	
		ON	OFF
		Solid	
LED-1	Red	5V Power (for PCB) ON	No 5V Power (for PCB)
LED-2	White	Cash Drawer Closed	Cash Drawer Open
LED-3	Yellow	Solenoid in position and ready to kick drawer open	Solenoid kicked drawer open
LED-4	Green	12V Power (Solenoid) ON	No 12V Power (Solenoid)

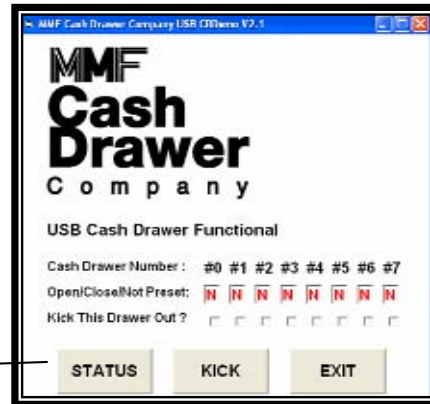
USB TEST UTILITY INSTALLATION

MMF Cash Drawer Company USB CRDemo

A CD with the utility drivers and test utility (See Figure 1.1) is included with the cash drawer. The drivers and test could also be found by logging on to:

http://www.mmfcashdrawer.com/08/driver_downloads.html

FIGURE 1.1



LEGEND	
Action	Result under Assigned Drawer #
Not Present	N
Closed	C
Opened	O

- ❶ Download the **MMF USB Driver and Test Utility** file by opening the zipped file.
 - » Open folder named "MMF USB_Setup"
 - » Click on the "Setup" Icon
 - » Click on "Run"
 - » Follow through the automatic setup
 - » After download is completed, go to "Start" Menu
 - » Go to "All Programs"
 - » Select the "MMF Cash Drawer Company USB CRDemo" program
- ❷ Click Status, a result letter character (N/C/O) should appear in the result box under the cash drawer number given to the unit by setting the dip switch (Step 1-Getting Started)
- ❸ Make sure cash drawer is closed and the letter 'C' appears in the result box.
- ❹ Click 'Kick' to open the cash drawer, the letter 'O' should now appear in the result box.
- ❺ Repeat if necessary

MMF OPOS DRIVER V1.9 INSTALLATION

STEP 1

Install MMF OPOS Driver V1.11, available under:
http://www.mmfcashdrawer.com/08/driver_downloads.html

❶ The user installing the MMF cash drawer software and configuring the cash drawer devices on Windows 2000 and Windows XP is required to have Administrator Rights. Once the software is installed, all users with normal rights can use it.

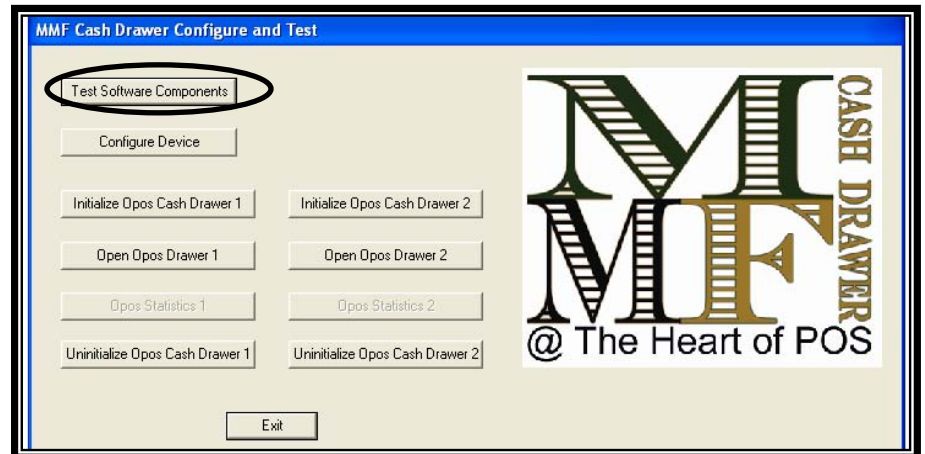
STEP 2

To install the driver run the file: Setup.exe.
 The program will ask you to unzip, click Unzip.
 » After download is completed, go to "Start" Menu
 » Go to "All Programs"
 » Select the "MMF Cash Drawer" program
 » Select the "Configure and Test" program

STEP 3

Open the "Configure and Test" program and click on "Configure Device". (See Figure 1.2)

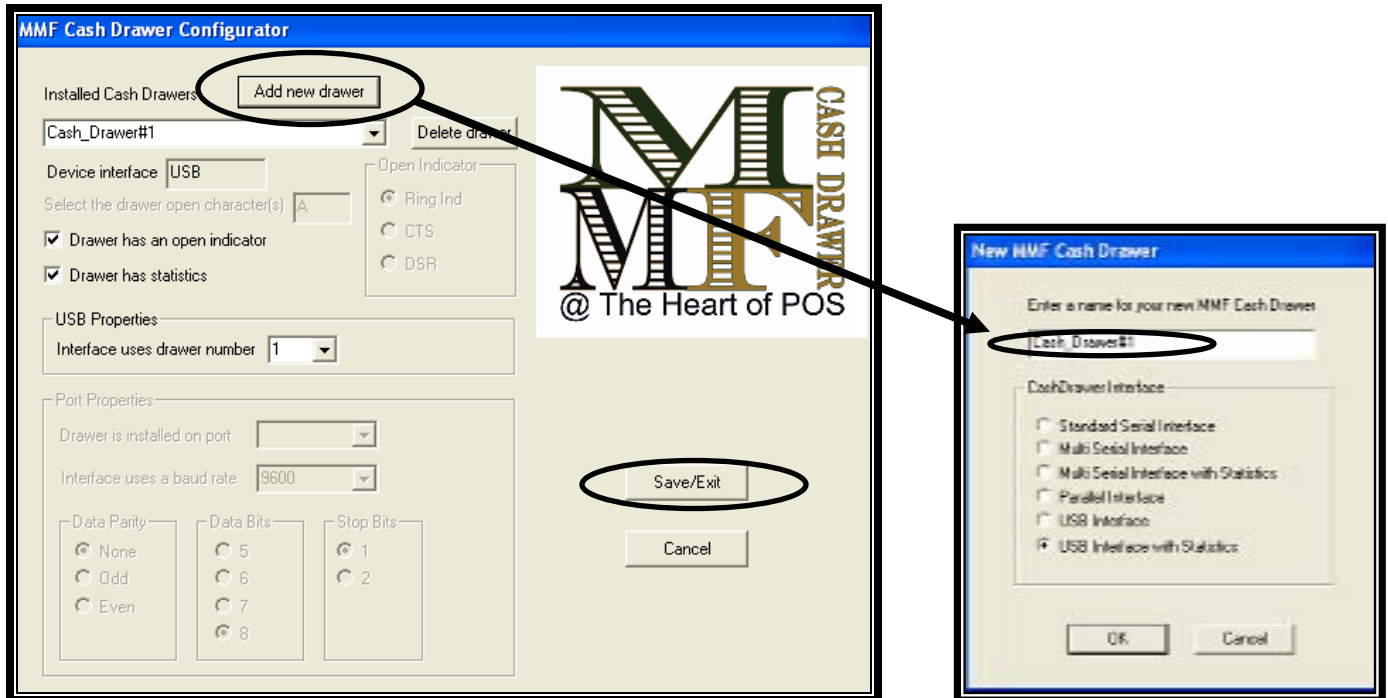
FIGURE 1.2



STEP 4

To configure drawer - click on "Add new drawer" called *Cash_Drawer#1*. Type all the settings as illustrated on the configuration screen (See Figure 1.3) and click "OK" to save settings.

FIGURE 1.3

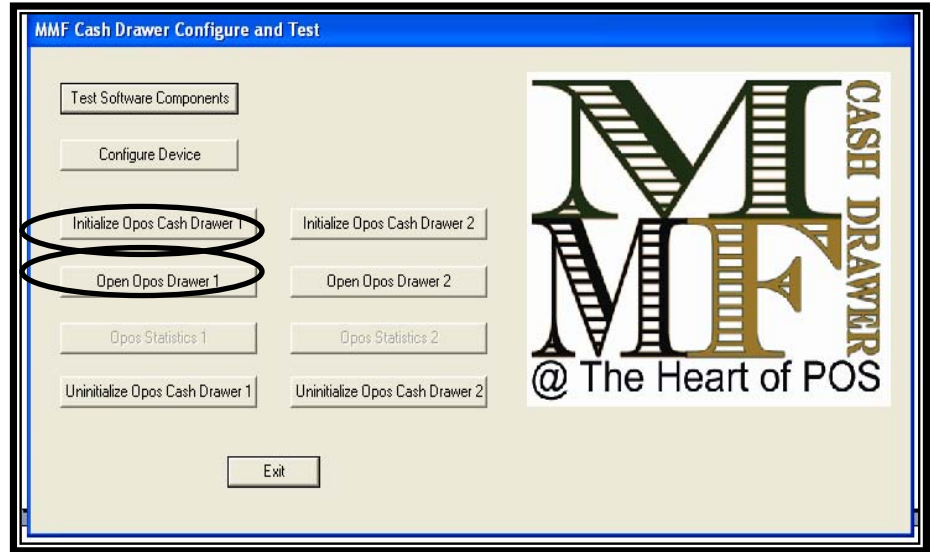


STEP 5

To test drawer - Click on "Initialize OPOS Drawer 1" then, click on "Open OPOS Drawer 1" (See Figure 1.4 the following message will be displayed:



FIGURE 1.4



STEP 6

Click "OK" to the above message and then manually close the cash drawer. When the drawer is completely closed the following message will be displayed:



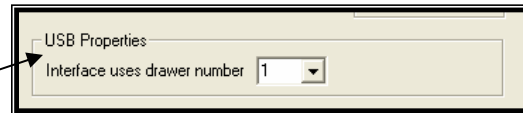
STEP 7

Click on "Un-initialize OPOS Drawer 1" and the test is complete.

TROUBLESHOOTING TIPS

Check Dipswitch Setting correlate to the name of the cash drawer.

- If installing the OPOS drivers, when adding a new drawer, make sure you selected "USB Interface with Statistics" as the Interface type.
- If installing the OPOS drivers, make sure that under 'USB Properties' the number in the dropdown is the same as the number selected for the drawer on the dipswitch.



Information

FCC Statement

DECLARATION OF CONFORMITY WITH FCC RULES FOR ELECTROMAGNETIC COMPATIBILITY

We, MMF Cash Drawer, declare that the product: USB Interface to which this declaration relates:

Complies with Part 15 of the FCC Rules
 This Class 'A' Digital apparatus complies with Canadian ICES-003.
 Cet appareil numérique de la classe 'A' est conforme à la norme NMB-003 du Canada.

CE Declaration

Complies with the EMC Directive 89/336/EEC Standard EN55022 (2006), EN55024(1998), EN61000-3-2(1995), EN61000-3-3(2006)